

Introduction

To start the communication between your screwdriver and a computer you need to :

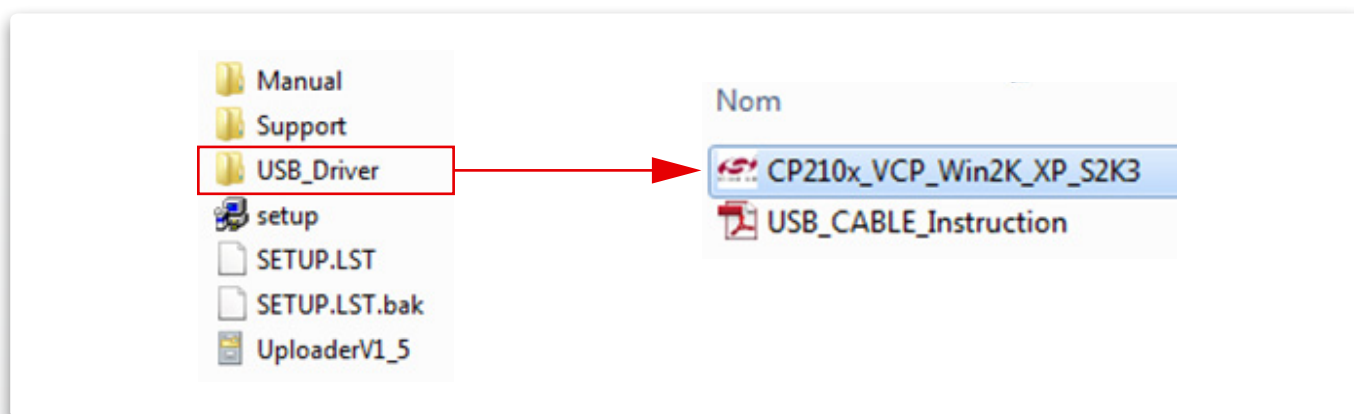
- install on your computer the USB driver which is used to connect the screwdriver with the PC,
- install the UPLOADER program needed to store on the PC the values measured with the screwdriver .

This manual contains the following sections:

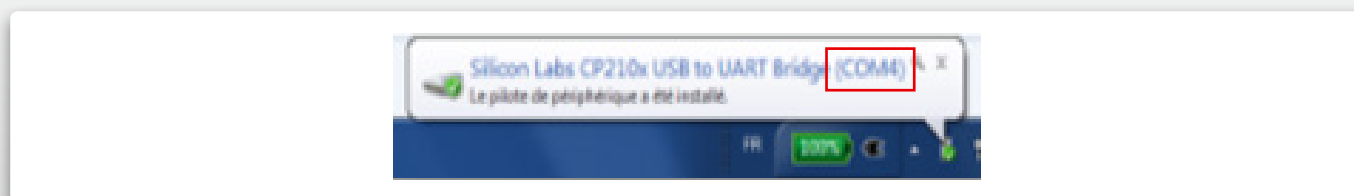
1. USB driver installation
2. UPLOADER program installation
3. Upload screwdriver records to PC

1 - USB driver installation

- Insert the installation CD into CD-ROM or open the folder uploaded from the FACOM.COM internet page
- In the «USB driver» directory run the «CP210x_VCP_Win2K_XP_S2K3» application
- Follow the instructions during installation

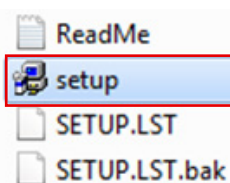


Once the installation is complete, an icon on the right side of your screen shows the PORT COM number to use for further communication.



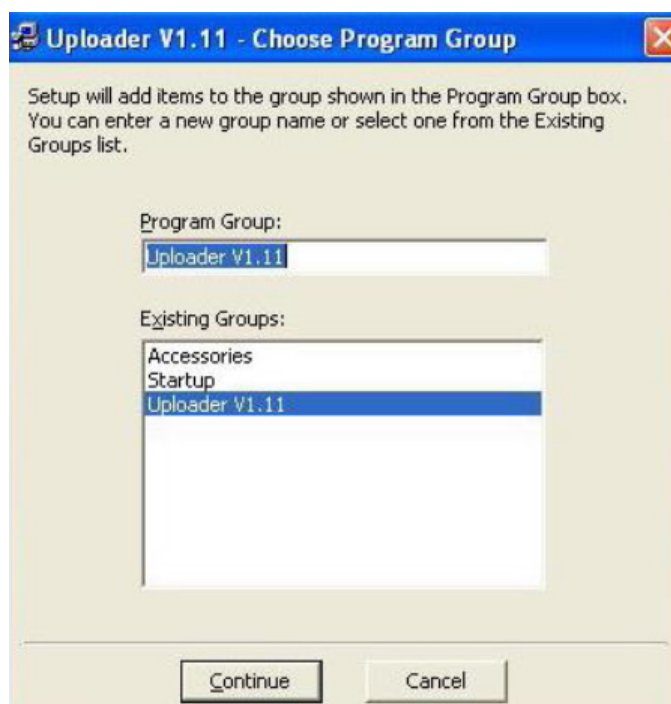
2 - Uploader program installation

- In the root directory of CD or uploaded folder, run the «setup.exe».



- Follow the instructions during installation

At this step, choose
Uploader V1.11



3 - Upload screwdriver records to pc

To start the communication between your screwdriver and a computer you need to:

- a. Run «UPLOADER» program
- b. Connect the communication cable between the PC and torque wrench
- c. Upload record data

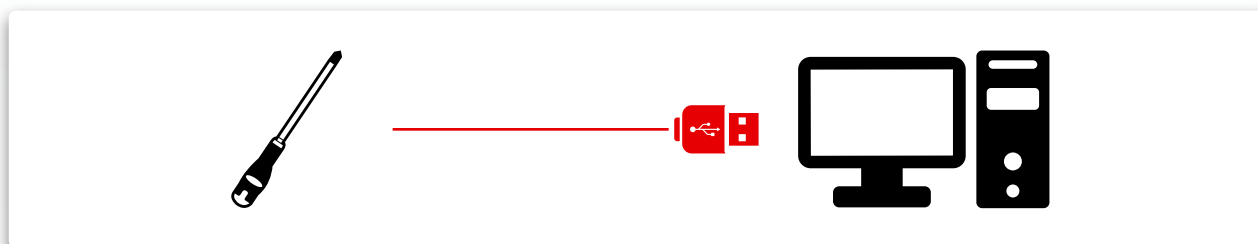
a - Run «UPLOADER» program

Run «UPLOADER» selecting the program from the start menu window.

Notice : If « Uploader » software is installed in Windows 7 / 8 , please choose "Run as administrator" to execute Uploader (on right click).

b - Connect communication cable

Connect the USB communication cable between the PC and screwdriver



On the screwdriver by click few seconds on the yellow button to enter the parameter menu :

- I. Check that peak mode (P) is selected



- II. Click on the yellow button until ConU (connection) text appears



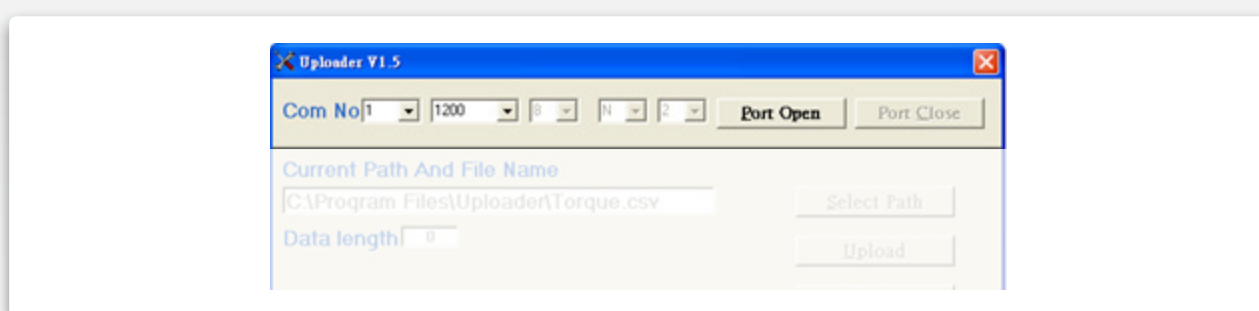
- III. Click on the blue button to reach «Send» command



c - Upload record data

- In Uploader, first select the correct com. port number.

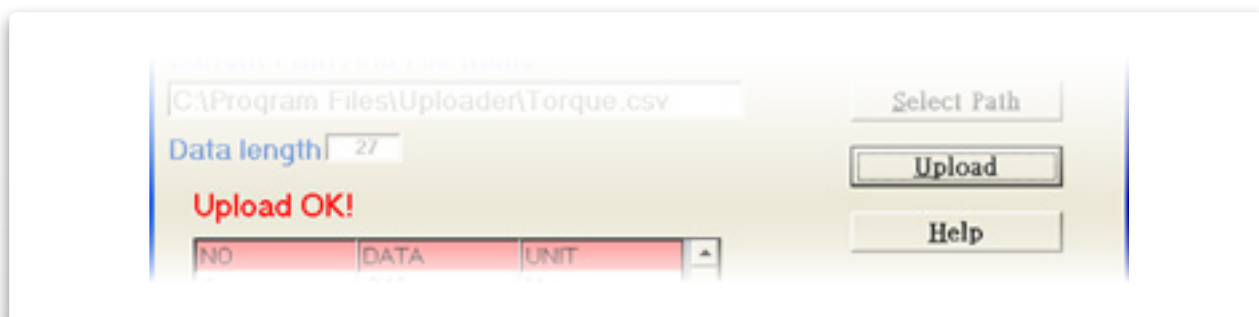
Note : if you don't remember the port com number, you can try each number and validate. When text on «Port Open» button change to bolt letters you have found the right communication port number.



- Then press «Port Open».

- Select the file path for saving the uploaded data using «select path» button.

- Press «Upload» button to transmit the screwdriver records to PC.



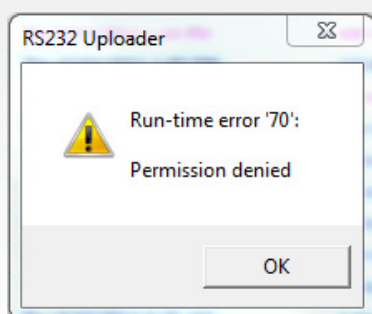
The uploaded data are then shown on the column and saved in the *.csv file.

Use Microsoft Excel to view the *.csv file.



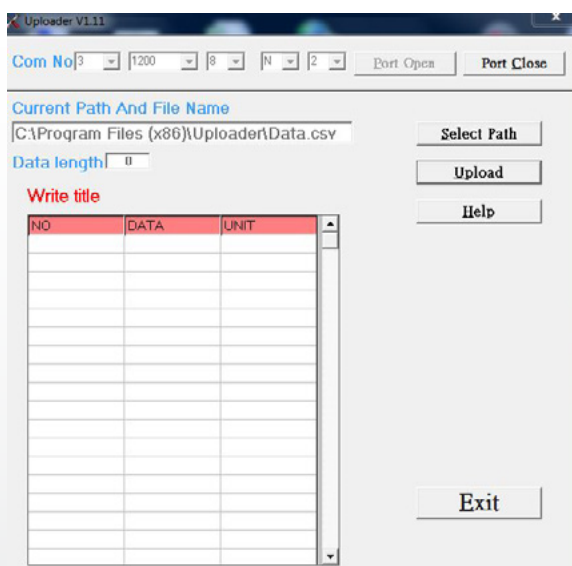
FREQUENT ERROR MESSAGES

1 - Permission denied



If the screwdriver is not in send mode

2 - Upload freeze «Write title»



- **Case 1** : Wrong port comm, another one should also be available.

- **Case 2** : File not found: select a different path changing from the default « uploader » folder, like in the following picture.

